

ONLINE PREVIEW

Scroll down to view ticket information, and descriptions and photos of the
10 layouts on this year's tour.

**11th ANNUAL
BRANTFORD
PORT DOVER & SIMCOE
MODEL RAILROAD LAYOUT TOUR
SATURDAY, APRIL 8, 2017
9 A.M. - 5 P.M.**

\$5.00 PER PERSON

Children under 12 free when accompanied by an adult



TICKET LOCATIONS

On April 8

Brantford Model RR Club - Behind 100 Waterloo St. Brantford
Jim Lewis – 271 South Drive, Simcoe

Prior to April 8

Paris Junction Hobbies - 300 Grand River Street, Paris
Credit Valley Railway – 2900 Argentia Road #24, Mississauga

For information, contact Ted Black 519-770-4086 revtedblack@hotmail.com
Proceeds to Brant Food for Thought www.brantfoodforthought.ca

1. **Brantford Model Railroad Club (John Dixon-president)**

Steel sided former garage behind 100 Waterloo Street, Brantford N3T 3S2 *Ticket Location*

Celebrating 70 years! The Brantford Model Railroad Club is the 3rd oldest model railroad club in Canada. Read about the Club's history at www.brantfordmrrclub.com

Name of Railroad	Grand Valley Central
Era and Location	70's to 90's Southern Ontario
Scale and Size	HO 20' x 40' 95% track 95% scenery

General Information

Double track mainline running approximately 150 feet (50 meters), with a single track secondary main, and a branch. Layout configured for point to point operation. Lots of industrial switching available.

The era and railway is not specific, but the scenery is loosely based on south-western Ontario in 1970's onward. Centralized dispatching with limited signaling, and train detection in the process of installation.

Operations consist of run-through unit trains (coal, intermodal), manifests which switch yards, and locals which switch industries.

Scenery is substantially complete, but improvements and additions are always being made.

In preparation for the Club's 70th anniversary, the building was repainted and new LED lighting installed, along with other upgrades.

Come check us out!



Brantford Model Railroad Club – Brantford



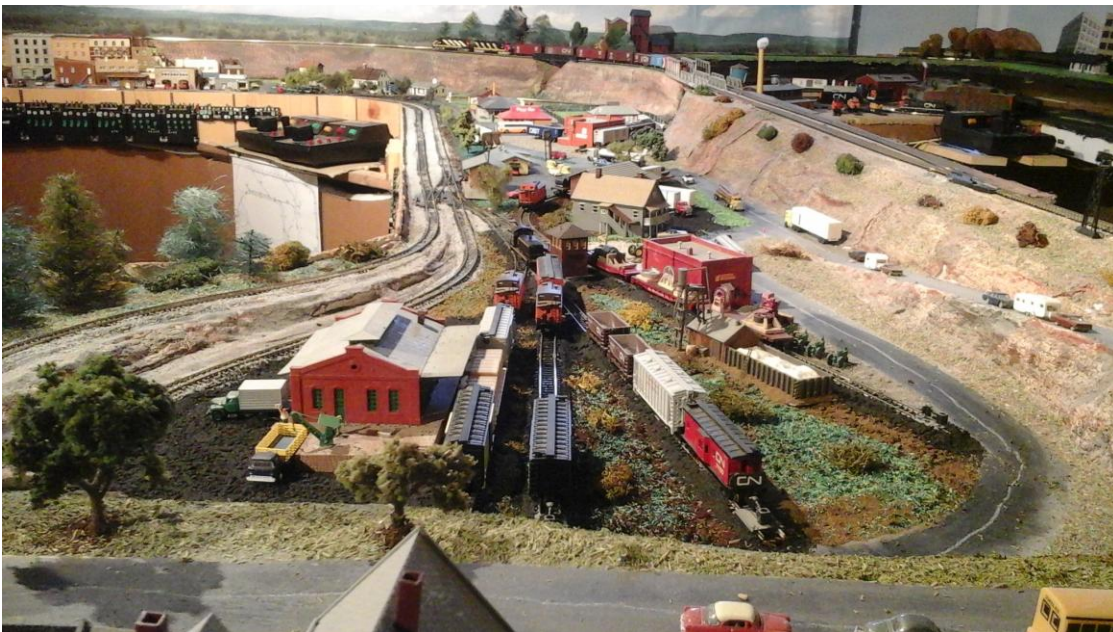
2. Ken Teakle - Brantford

New Layout

Name of Railroad	CN KAT division
Era and Location	1960-70ish somewhere in Canada
Scale and Size	N 16' x 10' L shape
	100% track, 80% scenery (until changes made)

General Information

Layout is very loosely based in the 1960s in some mythical part of Canada served by CN. It allows for running on 2 separate continuous loops, but also allows for some railroad operations. Layout was started over 20 years ago with a couple of special modules. It was then expanded. About 15 years ago we moved and it was reassembled in its present location. Due to work commitments it was minimally used for about 13 years. Retirement has led to more activity in the last couple of years.



Ken Teakle – Brantford



3. Greg and Gail Whayman - Brantford

New Layout in a New Location

Name of Railroad	New York and Seven
Era and Location	Late transition New York, New Haven & Seven
Scale and Size	HO approx 11'x20' including the Dispatcher's Office

General Information

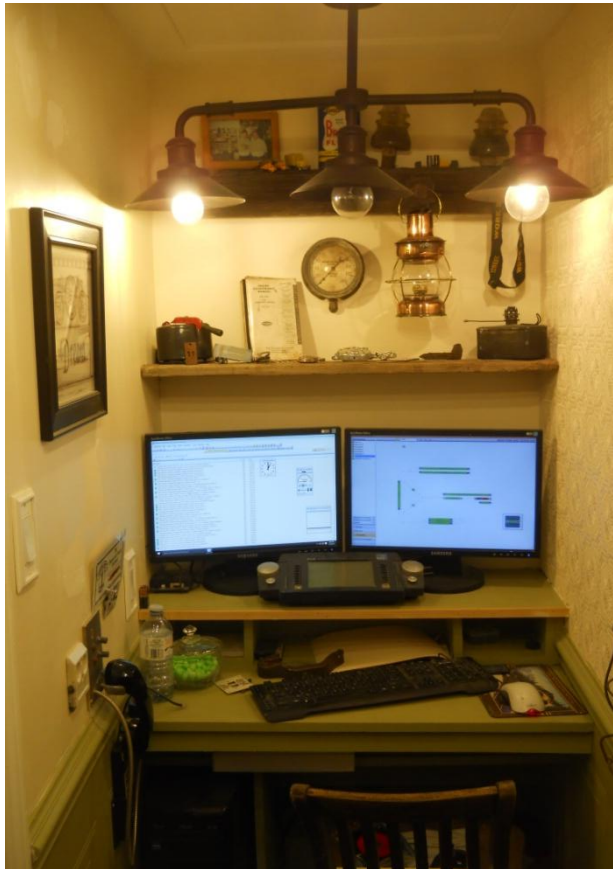
This new point to point railroad features craftsman structures including Fine Scale, South River, Sierra West, Best and Bar Mills, complimented with scratch builds. Hand laid track and turnouts, tortoise switch machines.

Computer controlled with Railroad Company Software 8 Gold with voltage drop detection, working signals and digitally addressed turn-outs. Dispatcher can program, watch and dispatch the movement of trains. Telephone communications between operators in the layout room and the dispatcher in a separate office.

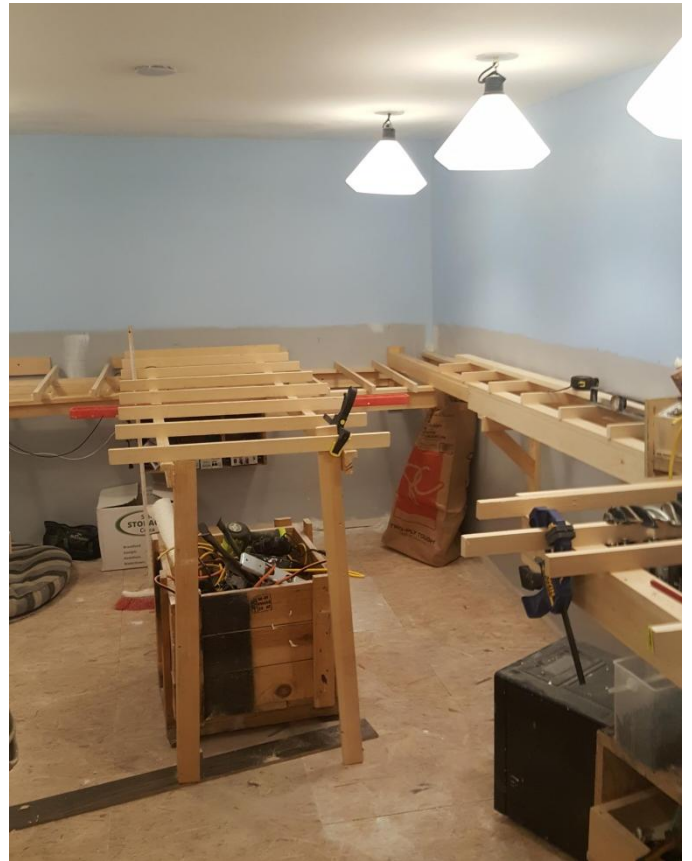
A previous New York and Seven RR. layout was featured on Trainmaster TV in December 2013, and Greg's design for spline-holders has been written up in Rail Journal and Canadian Railway Modeller.



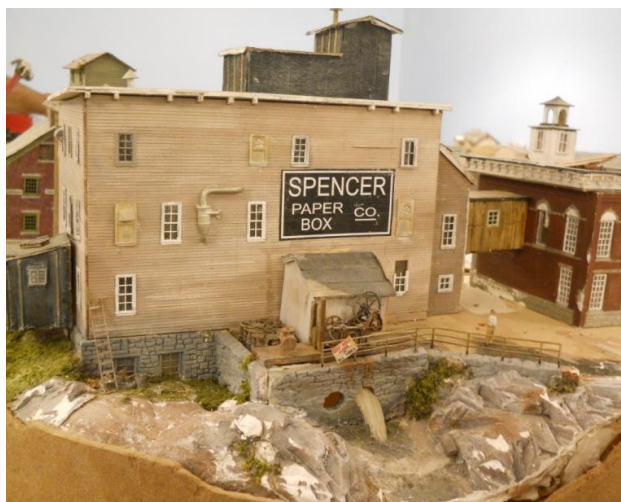
Greg and Gail Whayman – Brantford



Dispatcher's Office



L- Girder Benchwork (now covered)



Spencer Paper Box Co.



Pinkham's Pallet and Keg Co

4. Roger Chrysler – Brantford

Handicap Accessible

Name of Railroad	Lake Erie and Northern Rwy			
Era and Location	1953	Brant and Norfolk Counties		
Scale and Size	HO	11' x 42'	100% track	80% scenery

General Information

Replicating many prototype station and yard scenes including Glen Morris, Paris, Brantford, Mt Pleasant, Waterford, Simcoe, and Port Dover.

Many scratch built cars and buildings. Hand laid code 70 track. This traction layout is powered exclusively by overhead wire. Digitrax DCC control. Includes both Lake Erie and Northern and Grand River Railway equipment. Walk-in and walk-around shelf style layout with point-to-point car-card operations of fourteen passenger trains and three daily freight trains.

Relive the glory years of this historic local electric line.



Roger Chrysler – Brantford



5. Ted Black- Brantford

Name of Railroad	CN Brantford
Era and Location	1989 Brantford Yard & Hagersville Sub
Scale and Size	HO 15`x 11` 100% track 60% scenery

General Information

The Brantford Yard is the centre of operation on this four-level shelf layout. Two double track helices lead to the lower level 9-track staging yard which holds trains coming from Toronto/Hamilton and Windsor/Sarnia.

The Hagersville Sub branches off the main line east of the Brantford Station and climbs (via two more helices stacked on the others) to the two upper level shelves. The first upper shelf features four line-side industries in the Cainsville area. The top shelf features aspects of the line from Caledonia to Garnet Yard including the bridge across the Grand River and the Canadian Gypsum Plant near Hagersville.

The layout operates with DC block control and ShipIt! car forwarding. The schedule calls for 48 trains a day, including general freight trains, intermodal and auto trains, the steel train, way freights, and 16 VIA passenger trains.



Ted Black – Brantford



LRC Train 77 at Brantford



CN Wayfreight 559 at Hagersville



Looking east from Park Road in Brantford



Bridge over Grand River and Hwy 54 in Caledonia



Canadian Gypsum Mine and Wallboard Plant near Hagersville

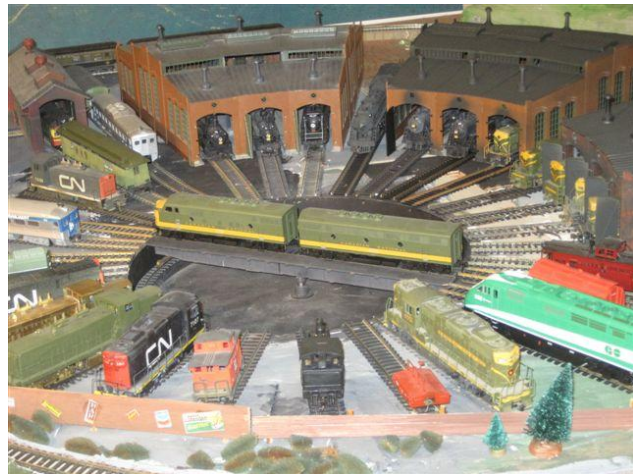
6. Dr. Garry Balsdon –RR4 Brantford

Name of Railroad	Canadian National			
Era and Location	1920s – 1970s	Somewhere in Canada		
Scale and Size	HO	21' x 16' W- shape	90% track	91% scenery

General Information

This railroad is predominantly Canadian National Railways in whatever part of Canada you want it to be. There are plenty of loads, specialty cars, passenger trains and nostalgia cars. Most visitors will not see them all. The DCC sub now hosts 3 different Alcos and 1 GMD black sheep. You just have to love the sound of an Alco!

Come and enjoy and ask questions about the trains - and a few warbird questions are also allowed.



7. Daryl Dankwardt - Simcoe

New Layout

Name of Railroad	Cedar Valley Railroad
Era and Location	Mid '50's Fictitious – Southern Ontario
Scale and Size	HO 12' x 38' 50% track work 0% scenery

General Information

This NEW hand laid code 70 layout has been under construction for aprox 2 1/2 years. It's constructed with L Girder bench work and the roadbed is spline work with homasote.

The railroad operates from a 6 track 12 position, in/out hidden staging yard representing all points east of Toronto and west of Windsor. Mainline towns from East to West are Carlow, Cedar Valley and Greystone. There is also a branch line juncture in Cedar Valley that supports Northridge, Holden and Red Hill mines industries.

Operation is primarily Canadian steam with transition/first generation diesel. The Control system is Digitrax DCC radio control and a mix of electronics such as pulse routed turnout control, indexed turntables, detector sensors and detailed control panels. This layout has been designed for full timetable operations using a card system and fast clock. The track is all hand laid code 70.



Overview of the Cedar Valley mainline and yards. Engines service in the distant right with the passenger terminal in the distant center. Industrial complex in foreground not yet complete.

Daryl Dankwardt - Simcoe



Mainline way freight town Carlow on the left and the branch line main yard Northridge on the upper right. No connection to Northridge at this point.



Mainline track with future locations of steel girder bridge and viaduct bridge. Also the location of a mainline junction way freight town.

8. Jim Lewis

271 South Drive, Simcoe N3Y 1G9

Ticket Location

Name of Railroad	Cedar Valley Railroad
Era and Location	1900 Lumber and mining country
Scale and Size	HO 12' x 9' with workshop staging yard
	90% lower level track 75% scenery

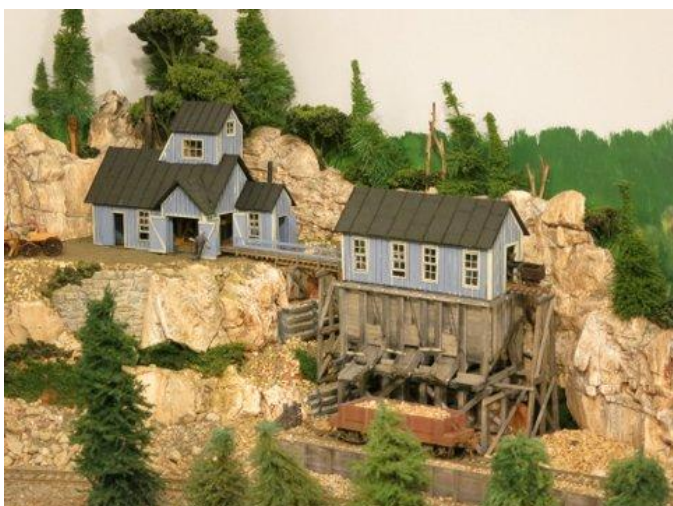
General Information

The layout is a lumber and mining operation with a port terminal. The track goes twice around the room with a hidden return loop.

The railroad services the town of Cedar Falls and the port of Cedar Bay as well as the mine at Cedar Hill. There are some very interesting scenes, including the ore mine, large and small sawmills, dock with the lumber schooner, and fishing wharf. There are a variety of buildings and industries most of which are either scratch built or modified kits. The layout features early small steam, some with sound. The layout is powered via Digitrax system.



Jim Lewis – Simcoe



9. Tim Warris (Fast Tracks) – Port Dover

Name CNJ Bronx Terminal
Scale and Size HO 6x8 100% Track & Scenery

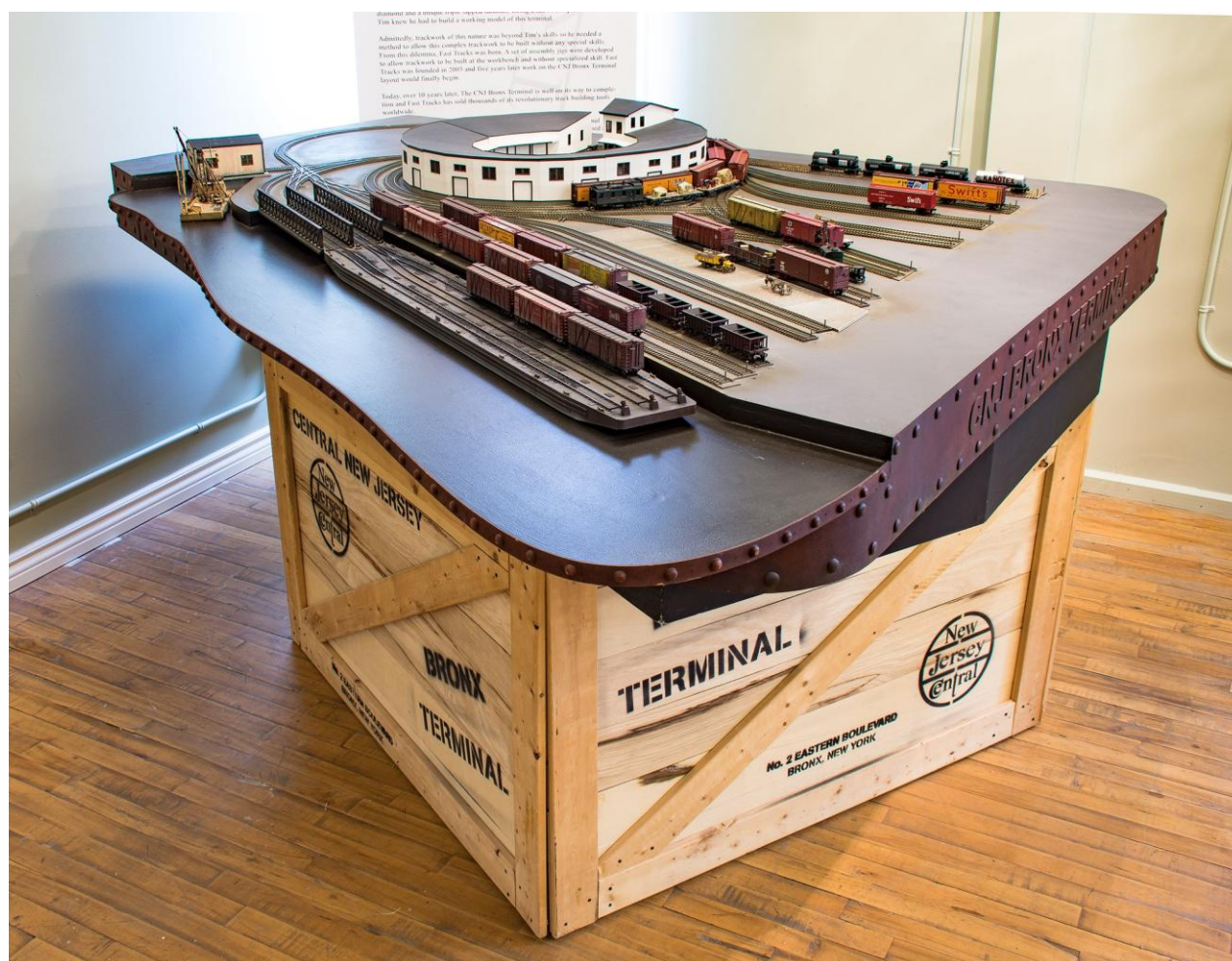
General Information

The Bronx Terminal built in 1906 in the Bronx, New York was a very unique operation. A victim of limited space, the terminal included a round freight house, 17 track yard with 75 car capacity, car barge and an engine house, all in one acre of land.

To accommodate all this some very complex trackwork had to be built.

The model is a faithful reproduction of the original, scaled down accurately to HO scale with no compression. Like the prototype the hand built trackwork includes a triple lapped turnout, quad diamond and 6 #3 three way turnouts.

The layout progress has been documented on Tim's website at www.bronx-terminal.com



10. John Frederick – Port Dover

Era and Location	1958 north-eastern Ontario – Ottawa valley
Scale and Size	HO 8' x 17' approx. 225' track
	100% track 90% buildings 50% scenery
General Information	

Layout intended to be grandchild friendly and interesting...but not heavy railroad operations.

All buildings, vehicles, and rolling stock, are consistent with the 1950s time frame. Rolling stock is a mix of CNR and CP freight and passenger. Locomotives are steam and diesel, some with sound.

Layout consists of 2 yards on inside loop running through an 8 foot tunnel and mountain with integrated reverse loop and station sidings. The perimeter trackage is double main line looping around the entire layout with a double crossover and several industrial sidings served off the mainline. There is a separate town centre with numerous business and store locations.

Table top layout with duck- under to centre control pit.
DCC operated with Digitrax Super Chief Extra system.



John Frederick – Port Dover



NOT on this year's tour, but look for them next year:

Gord King

Silver Lake Northshore



Paul Kelly

CNR Heritage Division

